

## **ThorMap Administration Console User Manual**

### **Version 3.5**

#### **I. Requirements**

--The ThorPCX Service software will install on any Windows Operating System beginning with WindowsXP or newer. At least 2GB of usable RAM is recommended.

--IIS must be installed on the PC/Server where the map files will be hosted.

--Windows .Net Framework 3.5 SP 1 or newer must be installed on the PC.

--TCP ports 943 and 4505 must be open from the end-user PC to the PC that is running the ThorPCX Service software.

--Each end-user workstation that makes a connection to ThorMap must have the Microsoft Silverlight plugin installed in the web browser that is used to load the URL to ThorMap.

--The ThorMap Console must have access to write to the location where the map will ultimately be hosted.

#### **II. Introduction**

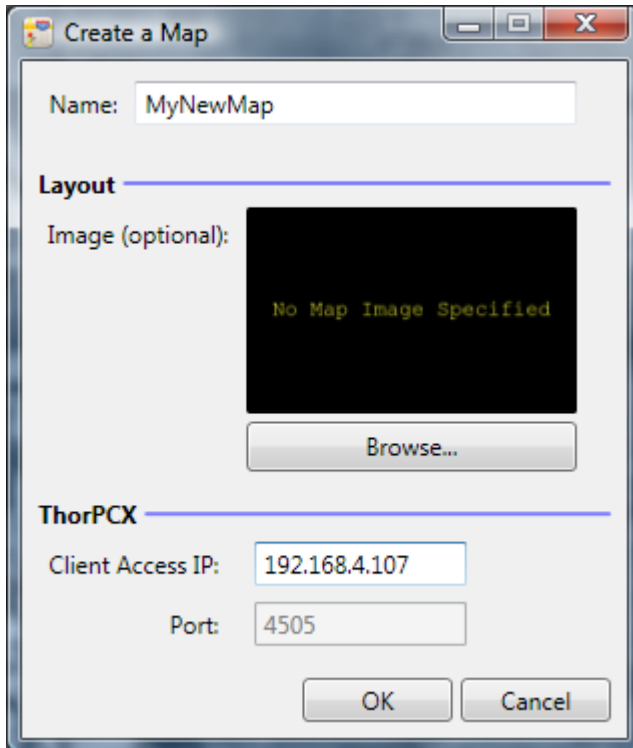
The ThorMap Console is an administrator application that provides the ability to setup and configure a map of Thor Guard sensors. This application DOES NOT need to be installed on the same PC/Server where ThorPCX is installed, though it is recommended. **The ThorMap Console's purpose is to configure a map and then place that map and its associated files on a PC/Server running IIS (Internet Information Services).**

IIS can be installed on any Windows-based PC and be configured to host and server out web files much as a web server.

### III. Setup



Open the ThorMap Console and click on the “Create a New Map” icon in the “Map Settings” section at the top (see image above). You will see the window below.



You will need to name your map. The name you designate for the map will become the name of the folder that is created to contain the necessary files on the web server.

Next, click the “Browse” button to select a background map. This should be a map that you cut with the dimensions of 900 pixels wide by 600 pixels high. Although the program will auto-size the map, you should try to create a map as close as possible to the specified dimensions in order to maintain the original resolution.

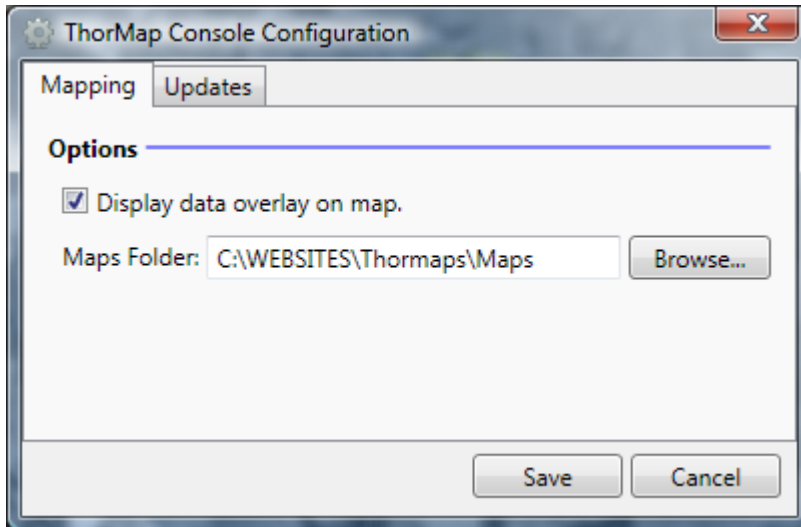
Enter the IP address of the PC/Server that is running the ThorPCX Service. This will be the same address of the “Client IP” in the ThorPCX software. It is the address that users will load into their web browsers to load the map.

Once the criteria have been entered, click the OK button to bring the map into the configuration window.

Click on the Global Configuration icon at the top-right of the program (see below image).



You will see the window below.



Check the box in front of “Display data overlay on map.”

Maps Folder: *This is the folder location where the map will be hosted on the “web server”.*

Save the configuration to return to the main map window.

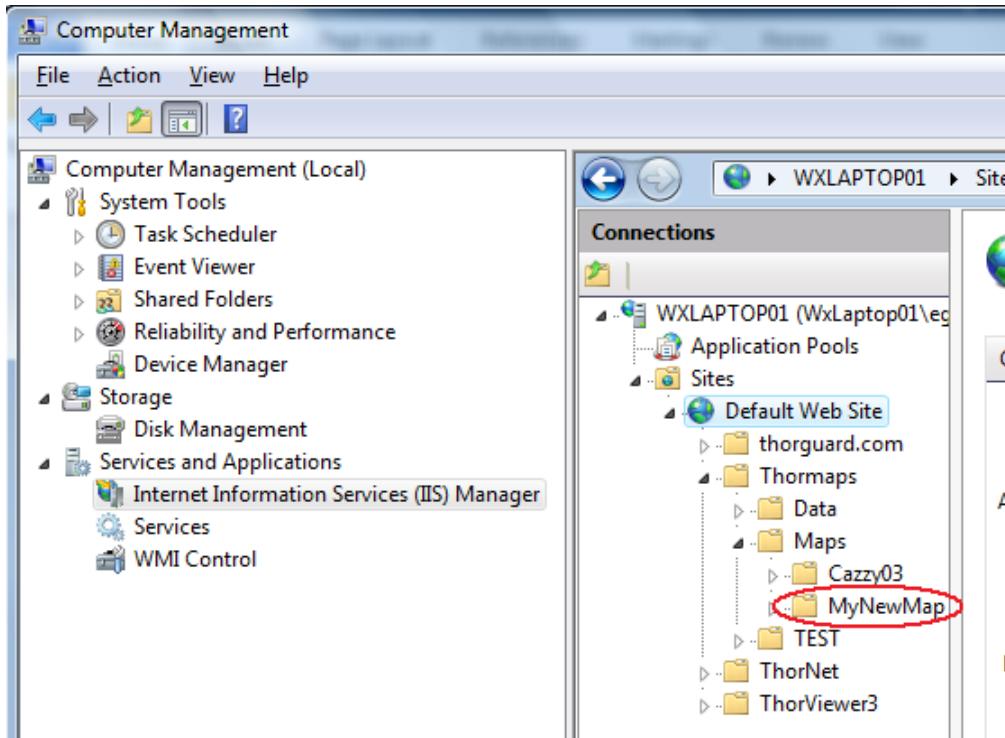
Once back to the main window, you can add, edit, or remove your available Thor Guard sensors. Be sure to save your map when you make changes.

### **Viewing Your ThorMap**

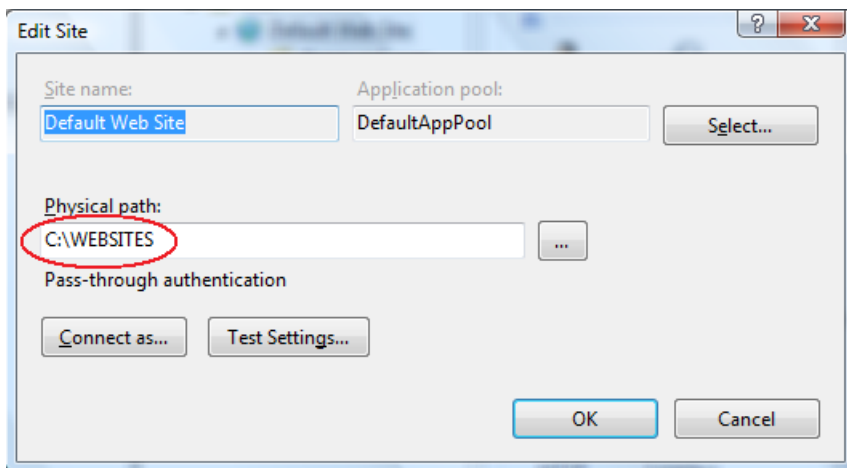
When your map is in a folder location that is being “hosted” by IIS, then you should be able to launch your map in a web browser, such as Internet Explorer. You should type the name of the server or domain name followed by the directory path in the address bar of the web browser. See the images below for an example of how to place the files in a valid IIS “web-hosted” directory and how to load the map in a web browser.

You can check your IIS settings by going into the Computer Management applet in the Control Panel. The Computer Management applet is typically located in the Administrative Tools section.

Notice in the image below where the websites can be configured in IIS. In the example below, the name of the website is “Default Web Site”. Notice that the Thor Guard map named “MyNewMap” is located under the “Default Web Site” directory. This indicates that anything in the “MyNewMap” folder will be “hosted” and available to be launched in a web browser.



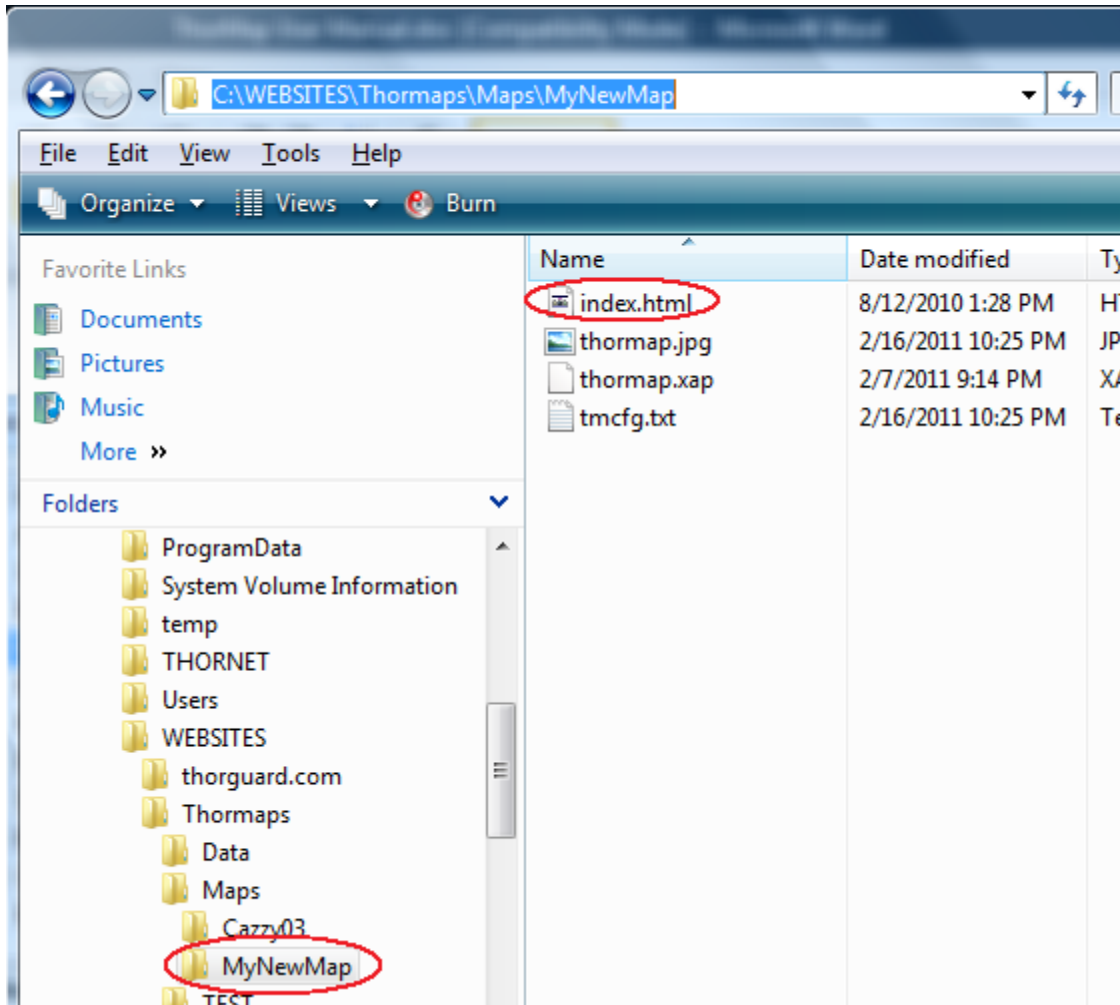
When you examine the properties or settings of the “Default Web Site” in the above image, we can see where the actual files are located on the PC. The below image represents the properties/settings of the “Default Web Site”.



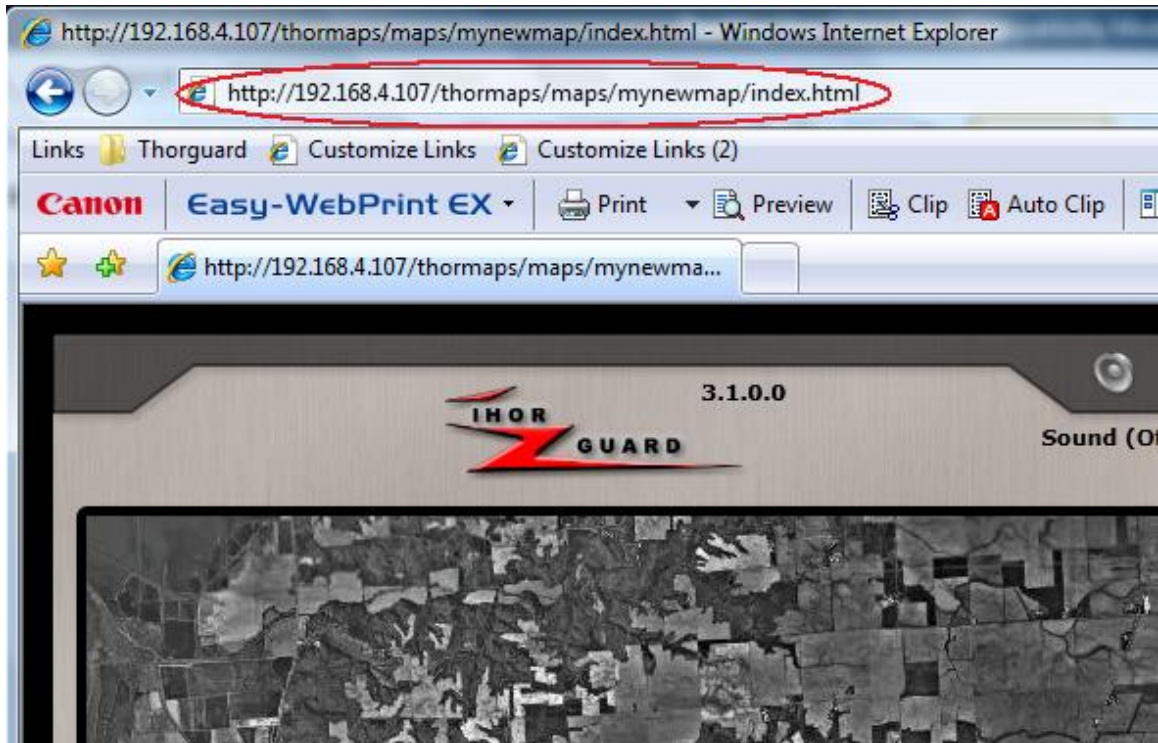
The above image is the settings/properties window for the “Default Web Site”. Notice that the actual location of the files for the website are located at “C:\Websites”. This

indicates to us that any folders or files that are placed in the “C:\Websites” folder will consequently exist in our “Default Web Site” and will be available for viewing in a web browser.

In the image below, see the actual location of “MyNewMap” in the folder structure of the PC. Notice the “index.html” file. This is the file that must be loaded in a web browser in order to view the ThorMap.



Once the above path is typed into the address field of the web browser, then the ThorMap should load. See the image below for an example of how to properly type the path in the web browser’s address field.



Now compare the URL in the above image (*URL is in the red circle*) to the location of the files.

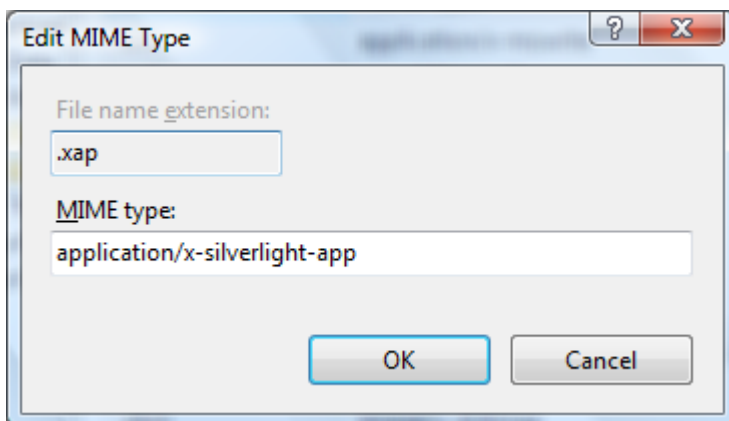
**Where map files are located:**

C:\WEBSITES\Thormaps\Maps\MyNewMap\index.html

**How to load those same map files in a web browser:**

<http://192.168.4.107/thormaps/maps/mynewmap/index.html>

**IMPORTANT NOTE:** Depending upon your PC or Server's version of Windows, you may need to add the below MIME type to the IIS configuration for your web site.



***IMPORTANT NOTE:*** You will need to have the Microsoft Silverlight plugin installed in your web browser in order to view your ThorMap. The Silverlight plugin can be downloaded at the following website:

<http://www.microsoft.com/getsilverlight/>

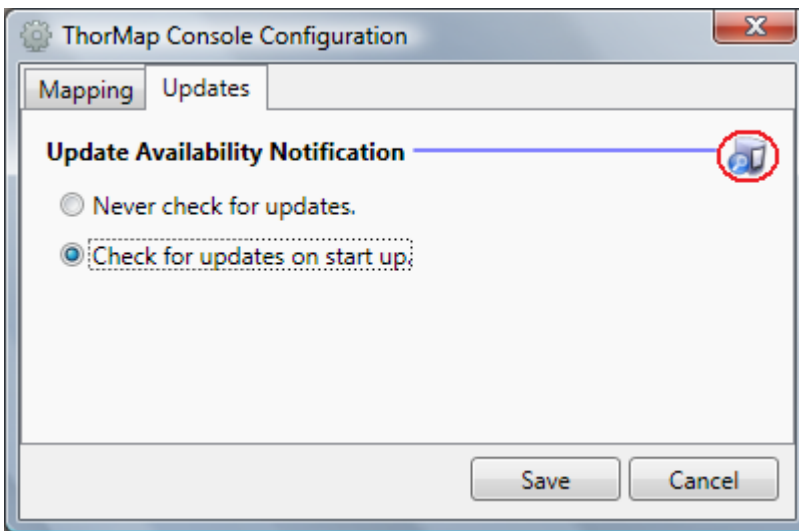
## IV. Other Features

### Updates



Click on the Configuration icon as shown in the image above to launch the window below.

ThorMap can be set to check for updates whenever ThorMap starts up or never at all. Manual updates can be performed by clicking the circled icon in the below window.



To use the update feature, you will need to have TCP ports 20 and 21 open from the PC to the Internet.

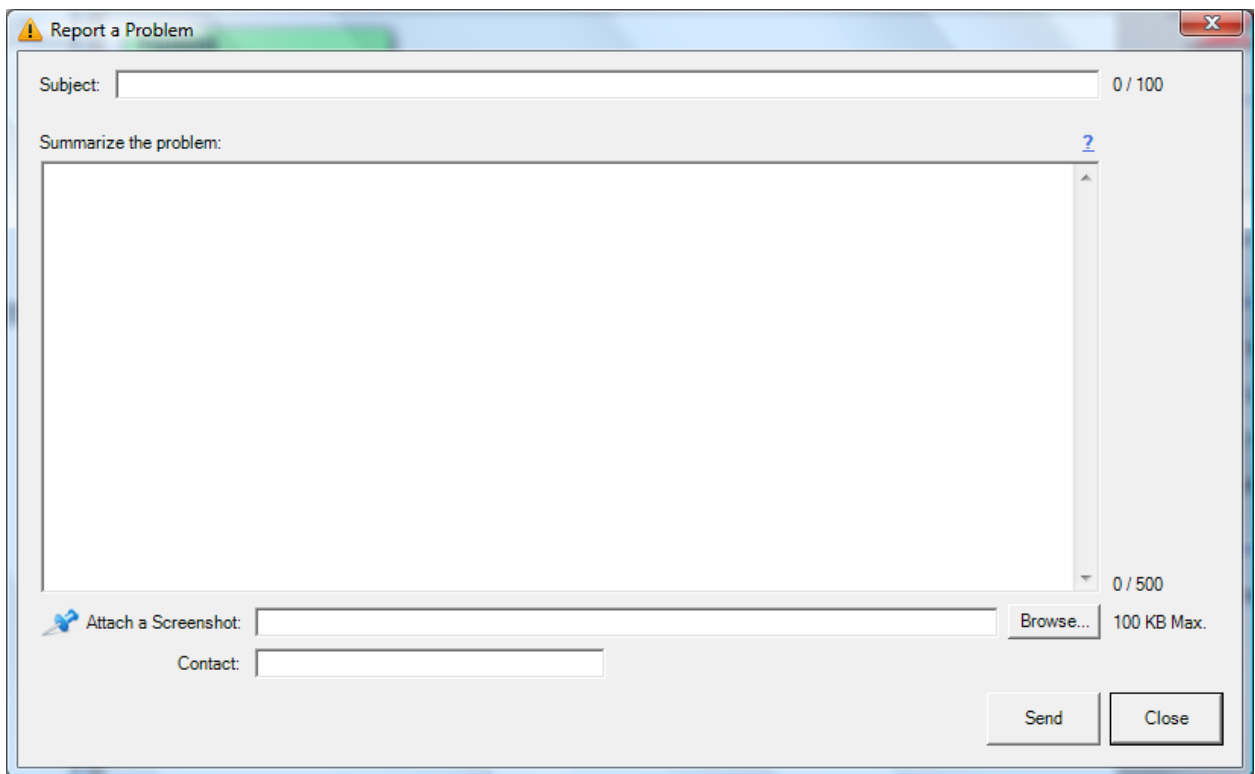


## Report a Problem

If you experience an issue with ThorMap, you can report the problem to Thor Guard by clicking the circled icon as shown in the image below.



When you click the icon as shown in the above screenshot, you will be presented with the window shown below.

A screenshot of the 'Report a Problem' dialog box. The dialog has a title bar with a yellow warning icon and the text 'Report a Problem'. It contains a 'Subject:' text box with a character count of '0 / 100'. Below it is a large text area labeled 'Summarize the problem:' with a character count of '0 / 500' and a help icon. At the bottom, there is an 'Attach a Screenshot:' section with a 'Browse...' button and a '100 KB Max.' limit. A 'Contact:' text box is also present. 'Send' and 'Close' buttons are located at the bottom right.

Fill out all the fields and click the “Send” button to report your message to Thor Guard. The submission of this message may fail when some types of email scanning software are running. Temporarily disable such software if the email submission fails.

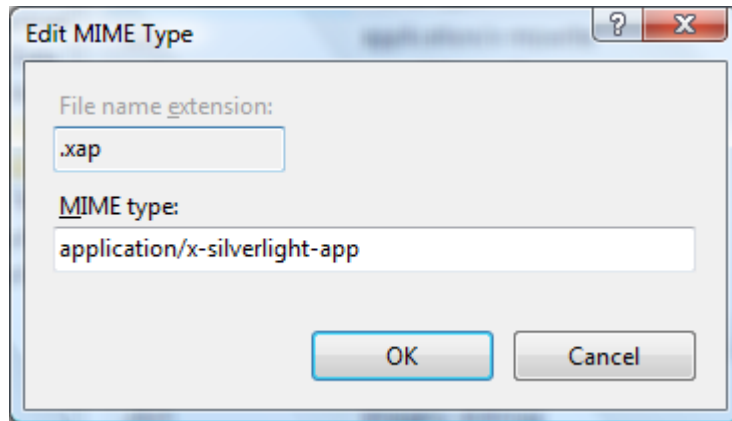
## V. Troubleshooting

If you are having trouble viewing your ThorMap, please verify the below settings.

- Ensure that you have the Microsoft Silverlight plugin installed in your web browser. You download the plugin at the following website:

<http://www.microsoft.com/getsilverlight/>

- Be sure that the Silverlight MIME type has been added to the IIS settings of the web site that is hosting your ThorMap. See the below image for the correct format in which to enter the MIME type:



- Determine that TCP ports 943 and 4505 are not being blocked. These ports must be unblocked from the path beginning at the PC's web browser that is attempting to view ThorMap to the PC that is running the ThorPCX software.

For software support, please email:

[support@thorguardweather.com](mailto:support@thorguardweather.com)